

**INSTRUMENT  
APPROACH  
CHART - ICAO**

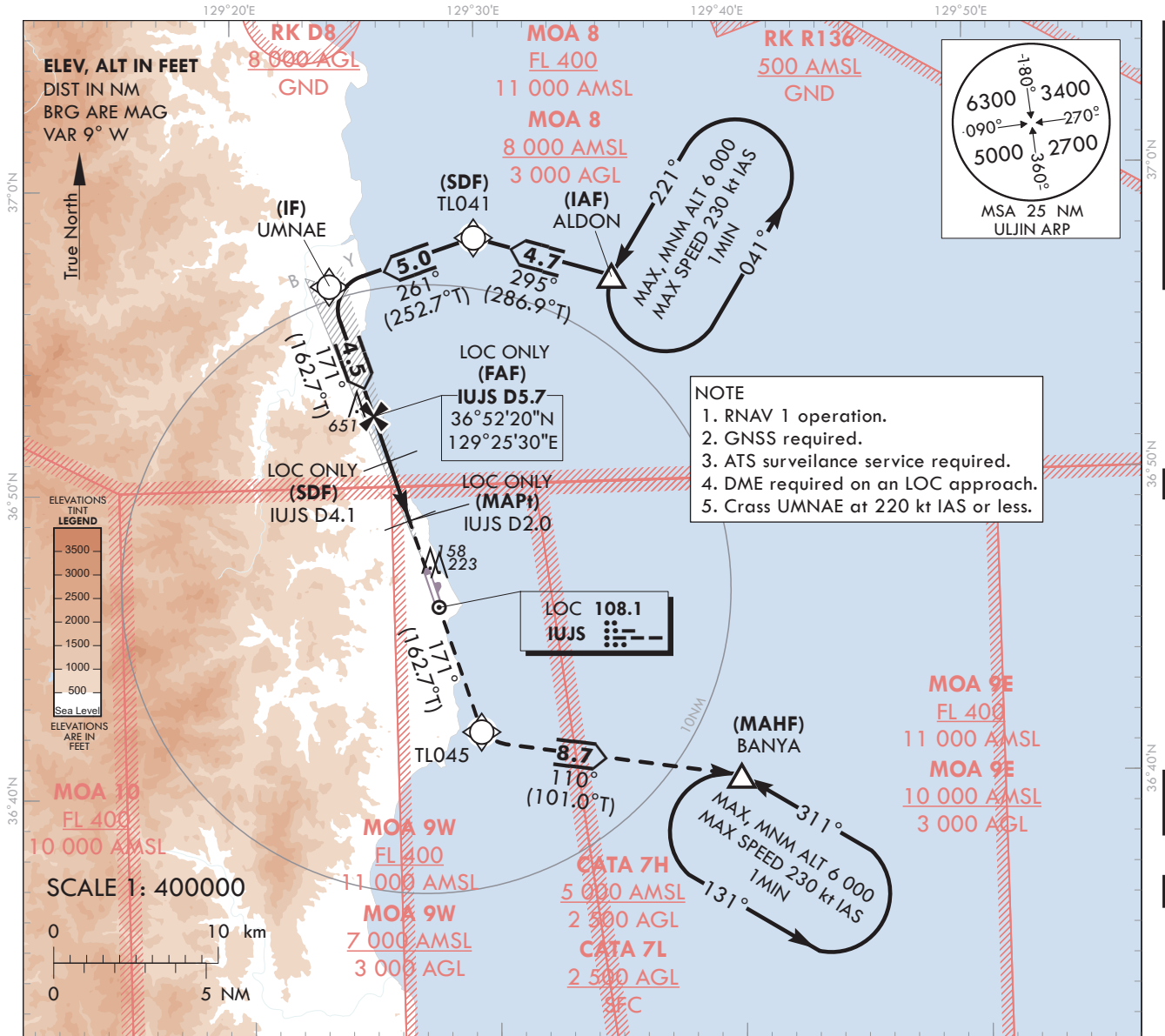
**AERODROME ELEV 175 ft**  
HEIGHTS RELATED TO  
THR RWY 17 - ELEV 175 ft

ULJIN	ARR	120.875
		317.65
ULJIN	TWR	118.55
		317.45

**ULJIN/ULjin(RKTL)**

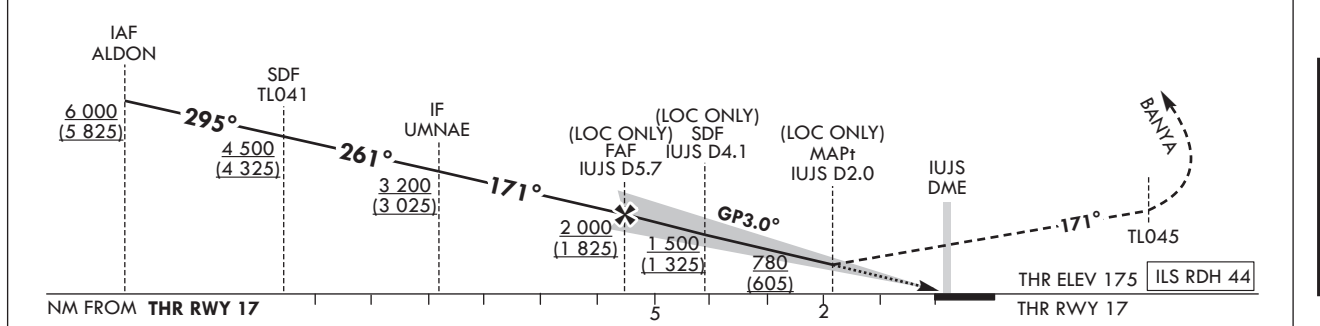
**ILS Z or LOC Z RWY 17**

Note : Approach under ICAO Flight Procedures.



RECOMMENDED PROFILE(LOC ONLY)	DME IUJS	5	4	3	2
Final Approach Gradient 5.32%, 323 ft/NM	ALT(HGT)	1 787 (1 612)	1 464 (1 289)	1 140 (965)	979 (804)
	TRANSITION ALT	14 000			
	TRANSITION LVL	FL 140			

**MISSED APPROACH**  
Climb straight ahead until TL045 then turn left to BANYA and hold at 6 000 ft.



STA	CATEGORY	DA(H)/MDA(H)	RVR				Rate of descent V/V fpm	Knots	60	90	120	150	180
			A	B	C	D							
STA	CAT-1	FULL	375 (200)	RVR 750 m, VIS 800 m				* Timing NOT authorized for defining the MAPt. * Circling not authorized.	318	478	637	796	955
		ALS INOP		1 200 m									
	LOC	FULL	780 (605)	3 000 m									
		ALS INOP		3 400 m									

Change : Information of MAG VAR(8° W → 9° W), MSA and instrument approach procedure for RWY 17.

ULJIN/Uijin(RKTL)  
ILS Z or LOC Z RWY 17

AERONAUTICAL DATA TABULATION

ILS Z / LOC Z Approach to RWY 17 from ALDON(IAF)		
Fix/Point		Coordinates
ALDON(IAF)		36°56'46.3"N 129°35'23.0"E
TL041(SDF)		36°58'07.9"N 129°29'46.5"E
UMNAE(IF)	BRG 171.28° / 10.17 NM IUJS	36°56'38.6"N 129°23'49.1"E
D5.7 IUJS(FAF LOC Only)	BRG 171.29° / 5.70 NM IUJS	36°52'20.0"N 129°25'29.6"E
D4.1 IUJS(SDF LOC Only)	BRG 171.27° / 4.10 NM IUJS	36°50'50.7"N 129°26'04.2"E
D2.0 IUJS(MAPt LOC Only)	BRG 171.28° / 2.0 NM IUJS	36°48'50.3"N 129°26'50.9"E
THR RWY 17	Final approach descent angle(LOC ONLY) 3.03° (FAF-SDF) / 3.05° (SDF-THR)	36°47'05.1"N 129°27'31.6"E
TL045		36°41'52.3"N 129°29'32.6"E
BANYA		36°40'12.4"N 129°40'05.8"E

Change : Information of instrument approach procedure for RWY 17.

**INSTRUMENT  
APPROACH  
CHART - ICAO**

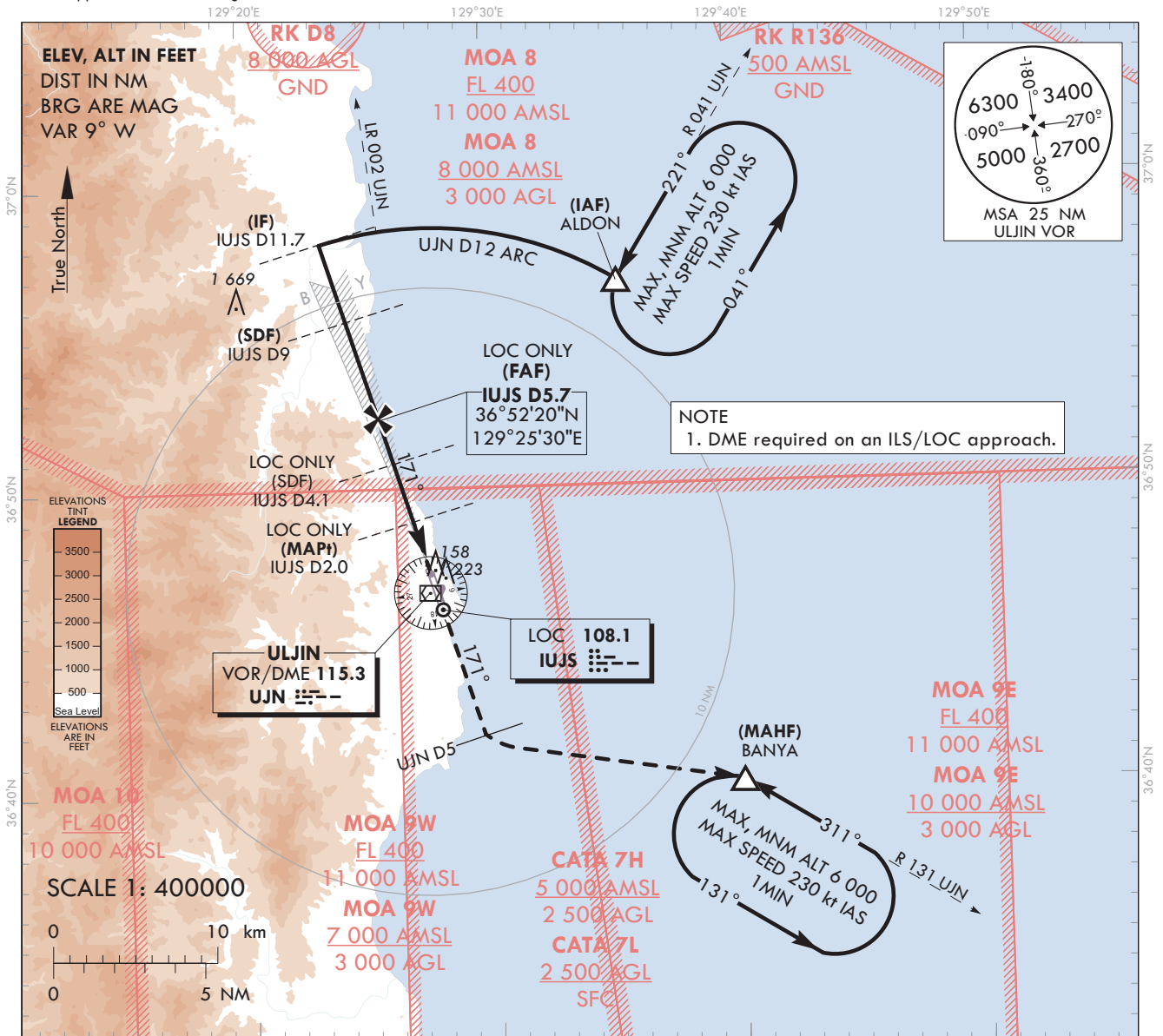
**AERODROME ELEV 175 ft**  
HEIGHTS RELATED TO  
THR RWY 17 - ELEV 175 ft

ULJIN	ARR	120.875
		317.65
ULJIN	TWR	118.55
		317.45

**ULJIN/ULjin(RKTL)**

**ILS Y or LOC Y RWY 17**

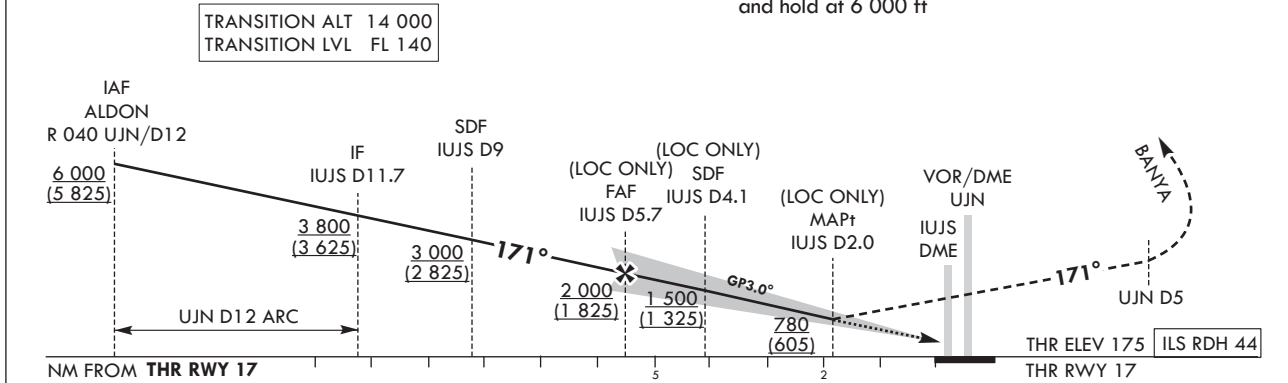
Note : Approach under ICAO Flight Procedures.



RECOMMENDED PROFILE(LOC ONLY)	DME IUJS	5	4	3	2
Final Approach Gradient 5.32%, 323 ft/NM	ALT(HGT)	1 787 (1 612)	1 464 (1 289)	1 140 (965)	979 (804)

**MISSED APPROACH**

Climb straight ahead until UJN D5 then turn left to BANYA and hold at 6 000 ft



CATEGORY	DA(H)/MDA(H)		A	B	C	D	Knots					
	FULL	ALS INOP					60	90	120	150	180	
STA	CAT-1	FULL	375	RVR 750 m, VIS 800 m			Rate of descent V/V fpm	318	478	637	796	955
		ALS INOP	(200)	1 200 m								
LOC	ALS INOP	FULL	780	3 000 m			* Timing NOT authorized for defining the MAPt.					
		ALS INOP	(605)	3 400 m			* Circling not authorized.					

Change : Information of UJN VOR/DME.

ULJIN/Uijin(RKTL)  
ILS Y or LOC Y RWY 17

AERONAUTICAL DATA TABULATION

ILS Y / LOC Y Approach to RWY 17 from ALDON(IAF)		
	Fix/Point	Coordinates
ALDON(IAF)	R 041 UJN / 12.00 NM UJN	36°56'46.3"N 129°35'23.0"E
D11.7 IUJS(IF)	BRG 171.28° / 11.70 NM IUJS	36°58'06.9"N 129°23'14.8"E
D9.0 IUJS(SDF)	BRG 171.29° / 9.00 NM IUJS	36°55'31.8"N 129°24'15.1"E
D5.7 IUJS(FAF LOC Only)	BRG 171.29° / 5.70 NM IUJS	36°52'20.0"N 129°25'29.6"E
D4.1 IUJS(SDF LOC Only)	BRG 171.27° / 4.10 NM IUJS	36°50'50.7"N 129°26'04.2"E
D2.0 IUJS(MAPt LOC Only)	BRG 171.28° / 2.00 NM IUJS	36°48'50.3"N 129°26'50.9"E
THR RWY 17	Final approach descent angle(LOC ONLY) 3.03°(FAF-SDF) / 3.05°(SDF-THR)	36°47'05.1"N 129°27'31.6"E
UJN VOR/DME		36°46'35.2"N 129°27'26.9"E
D5 UJN	R 169 UJN / 5.00 NM UJN	36°41'52.3"N 129°29'32.6"E
BANYA	R 131 UJN / 12.00 NM UJN	36°40'12.4"N 129°40'05.8"E

**INSTRUMENT  
APPROACH  
CHART - ICAO**

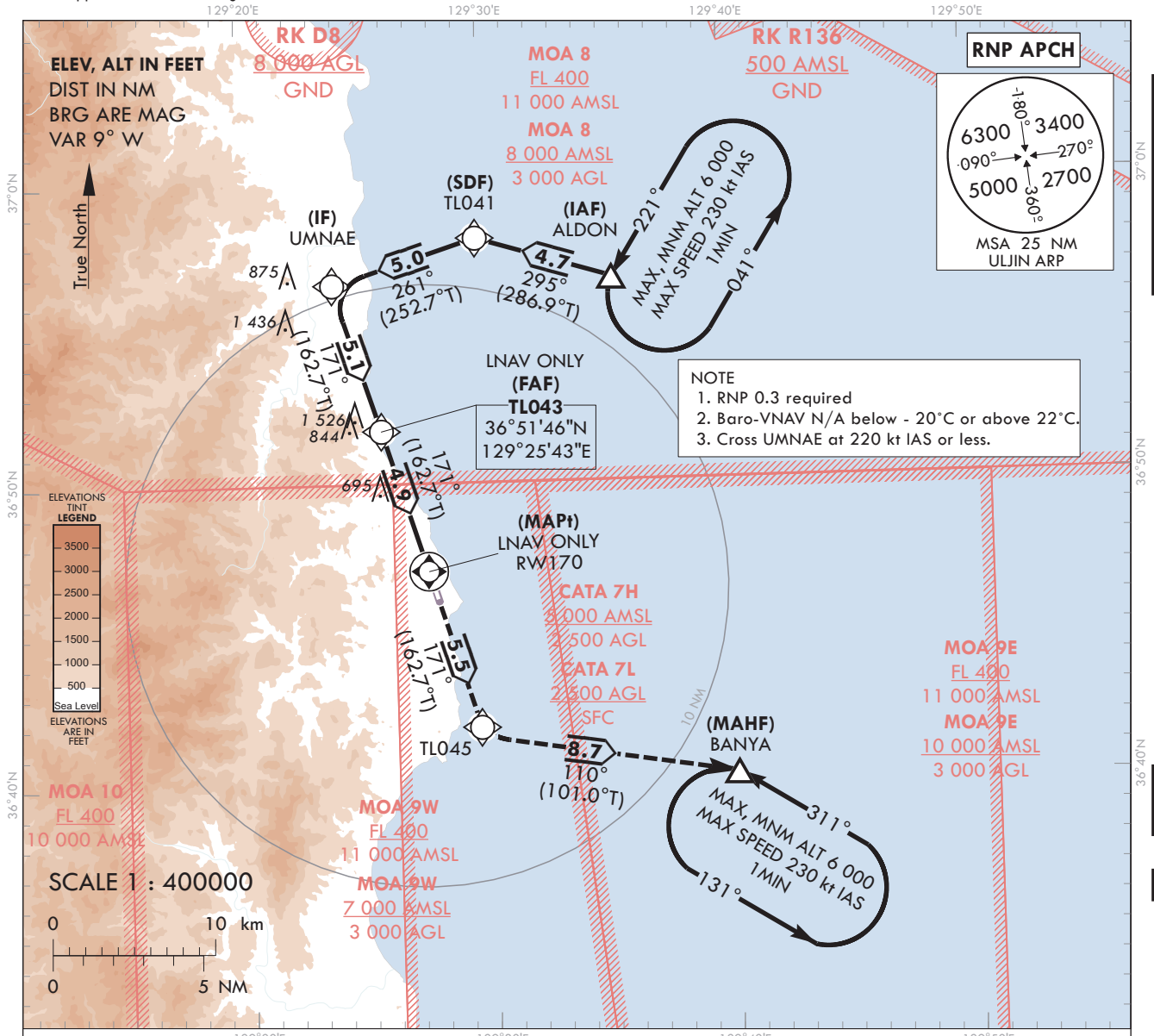
**AERODROME ELEV 175 ft**  
HEIGHTS RELATED TO  
THR RWY 17 - ELEV 175 ft

ULJIN	ARR	120.875
		317.65
ULJIN	TWR	118.55
		317.45

**ULJIN/ULjin(RKTL)**

**RNP RWY 17**

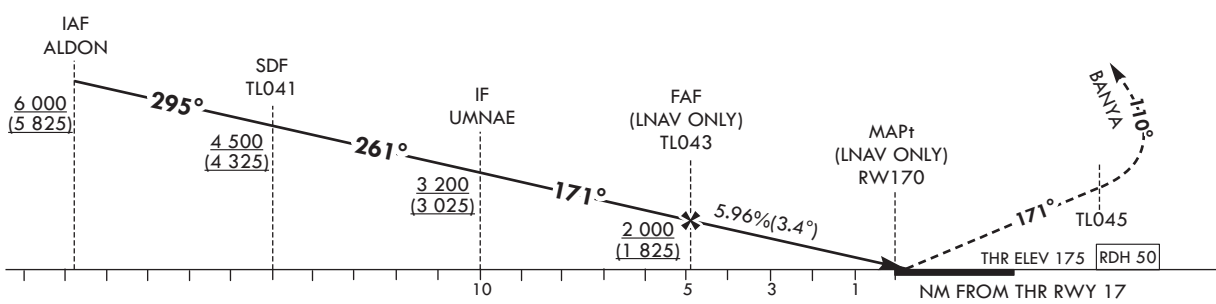
Note : Approach under ICAO Flight Procedures.



**TRANSITION ALT 14 000**  
**TRANSITION LVL FL 140**

**MISSED APPROACH**

Climb to 6 000 ft on track of 171° to TL045, then turn left on track of 110° to BANYA. Hold as published.



CATEGORY		DA(H)/MDA(H)	A	B	C	D							
STA	LNAV/VNAV	FULL	720	2 200 m			Rate of descent	Knots	60	90	120	150	180
		ALS INOP	(545)	2 600 m									
	LNAV	FULL	950	3 200 m			* Timing NOT authorized for defining the MAPt.						
		ALS INOP	(775)	3 600 m			* Circling not authorized.						

Change : Information of MAG VAR(8° W → 9° W), MSA and instrument approach procedure for RWY 17.

AERONAUTICAL DATA TABULATION

Instrument approach Procedure Coding Tables

RNP RWY 17 - via ALDON(IAF) to BANYA(MAHF)

Serial Number	Path Descriptor	Waypoint Identifier	Fly- over	Course/Track °M(°T)	Distance (NM)	Turn direction	Altitude (ft)	Speed (kt)	Coordinates	VPA/TCH	Navigation specification	Remarks
001	IF	ALDON	-	-	-	-	+6 000	-	36°56'46.3"N 129°35'23.0"E	-	RNP APCH	IAF
002	TF	TL041	-	295(286.8)	4.7	-	+4 500	-	36°58'07.9"N 129°29'46.5"E	-	RNP APCH	SDF
003	TF	UMNAE	-	261(252.7)	5.0	-	+3 200	-220	36°56'38.6"N 129°23'49.1"E	-	RNP APCH	IF
004	TF	TL043	-	171(162.7)	5.1	-	+2 000	-	36°51'46.1"N 129°25'42.7"E	-	RNP APCH	FAF
005	TF	RW170	Y	171(162.7)	4.9	-	+950	-	36°47'05.1"N 129°27'31.6"E	-3.41/50	RNP APCH	MAPt
006	TF	TL045	-	171(162.7)	5.5	-	-	-	36°41'52.3"N 129°29'32.6"E	-	RNP APCH	-
007	TF	BANYA	-	110(101.0)	8.7	-	@6 000	-	36°40'12.4"N 129°40'05.8"E	-	RNP APCH	-
008	HM	BANYA	-	311(302.0)	-	L	@6 000	-230	36°40'12.4"N 129°40'05.8"E	-	RNP APCH	1 MIN (outbound timing)

HOLDING PROCEDURE

Holding Identification	Path Descriptor	Waypoint Identifier	Fly- over	Course/Track °M(°T)	Time (min)	Turn direction	Altitude (ft)	Speed (kt)	Coordinates	VPA/TCH	Navigation specification	Remarks
RNP RWY 17	HM	ALDON	Y	221(182.0)	1.0	L	@6 000	-230	36°56'46.3"N 129°35'23.0"E	-	RNAV 1	-

Change : Information of instrument approach procedure for RWY 17.

**INSTRUMENT  
APPROACH  
CHART - ICAO**

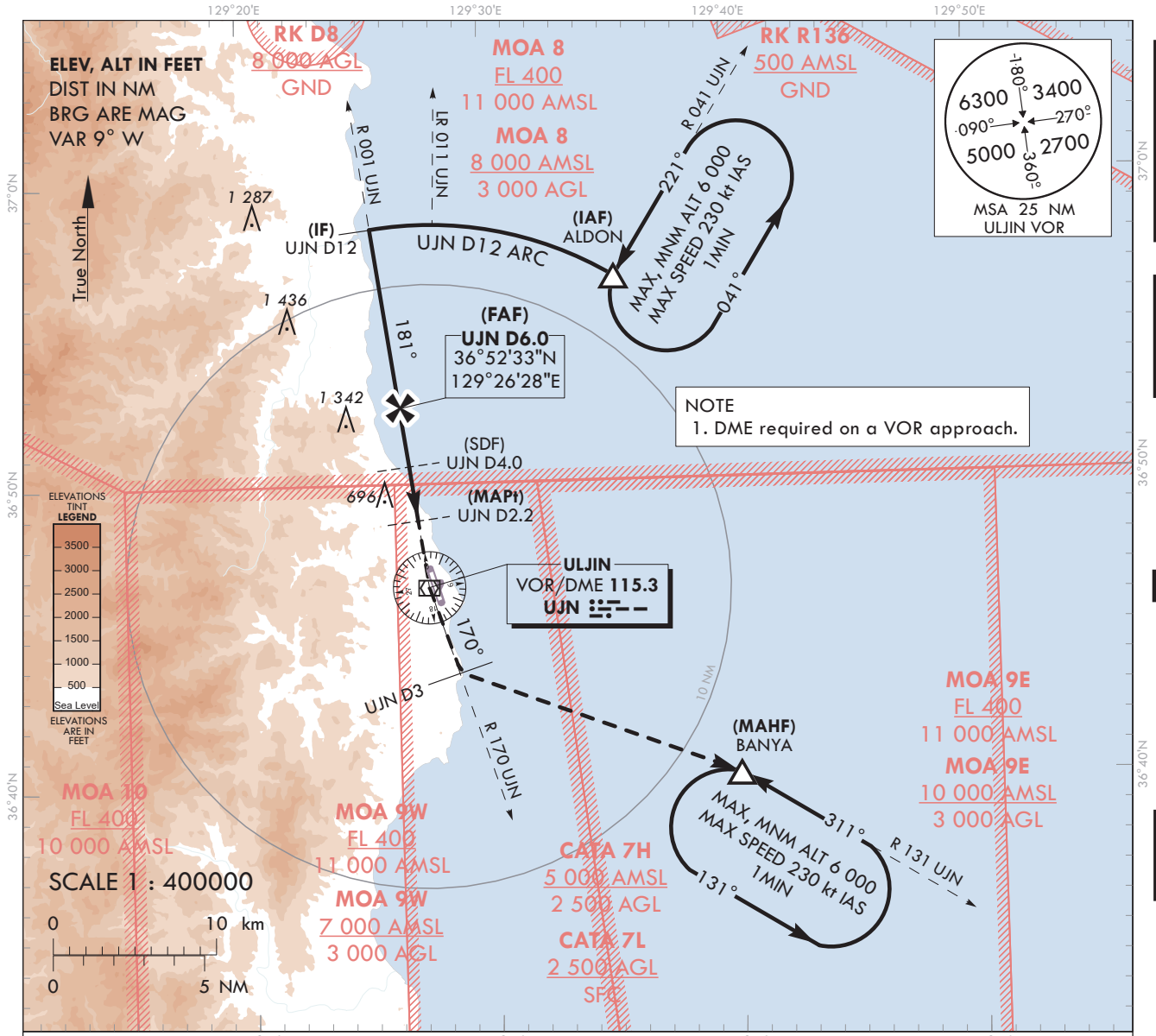
**AERODROME ELEV 175 ft  
HEIGHTS RELATED TO AD ELEV**

ULJIN	ARR	120.875
		317.65
ULJIN	TWR	118.55
		317.45

**ULJIN/ULjin(RKTL)**

**VOR RWY 17**

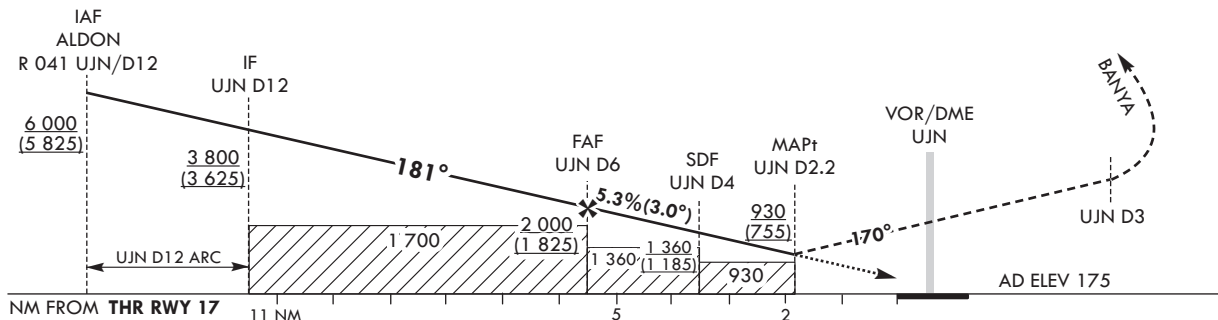
Note : Approach under ICAO Flight Procedures.



TRANSITION ALT	14 000	RECOMMENDED PROFILE(LOC ONLY)				
TRANSITION LVL	FL 140	DME UJN	5	4	3	2.5
Final Approach Gradient 5.31%, 323 ft/NM		ALT(HGT)	1 677 (1 502)	1 354 (1 179)	1 032 (856)	870 (695)

**MISSED APPROACH**

Climb on R 001 UJN to UJN and R 170 UJN to 3 DME,  
then turn left to BANYA and hold at 6 000 ft.



CATEGORY		MDA(H)	A	B	C	D	Rate of descent	Knots	60	90	120	150	180
STA	FULL	930	3 100 m				* Timing NOT authorized for defining the MAPt.	V/V	323	484	646	807	968
	ALS INOP	(755)	3 500 m					* Circling not authorized.	fpm				

Change : Information of MAG VAR(8° W → 9° W), MSA, UJN VOR/DME and instrument approach procedure for RWY 17.

ULJIN/Uijin(RKTL)  
VOR RWY 17

AERONAUTICAL DATA TABULATION

VOR Approach to RWY 17 from ALDON(IAF)		
	Fix/Point	Coordinates
ALDON(IAF)	R 041 UJN / 12.00 NM UJN	36°56'46.3"N 129°35'23.0"E
D12.0 UJN(IF)	BRG 181.00° / 12.00 NM UJN	36°58'29.8"N 129°25'28.5"E
D6.0 UJN(FAF)	BRG 181.00° / 6.00 NM UJN	36°52'32.5"N 129°26'27.8"E
D4.0 UJN(SDF)	BRG 181.00° / 4.00 NM UJN	36°50'33.4"N 129°26'47.5"E
D2.2 UJN(MAPt)	BRG 181.00° / 2.20 NM UJN	36°48'46.2"N 129°27'05.3"E
THR RWY 17	Final approach descent angle (LOC ONLY) 3.01°(FAF-SDF) / 3.06°(SDF-THR)	36°47'05.1"N 129°27'31.6"E
UJN VOR/DME		36°46'35.2"N 129°27'26.9"E
D3 UJN	R 170 UJN/ 3.00 NM UJN	36°43'44.3"N 129°28'38.3"E
BANYA	R 131 UJN/ 12.00 NM UJN	36°40'12.4"N 129°40'05.8"E

Change : Information of instrument approach procedure for RWY 17.



**INSTRUMENT  
APPROACH  
CHART - ICAO**

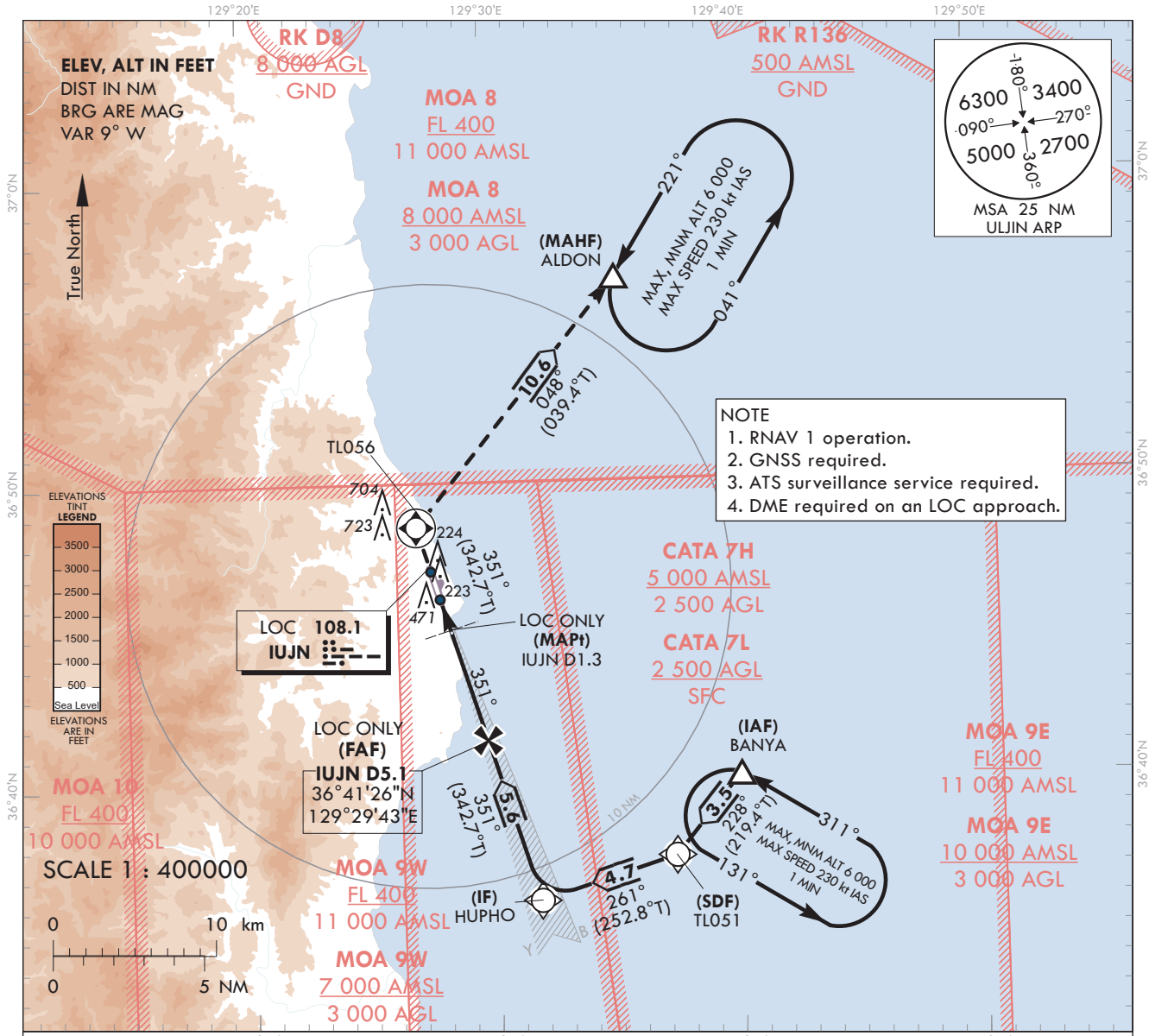
**AERODROME ELEV 175 ft**  
HEIGHTS RELATED TO  
THR RWY 35 - ELEV 158 ft

ULJIN	ARR	120.875
		317.65
ULJIN	TWR	118.55
		317.45

**ULJIN/ULjin(RKTL)**

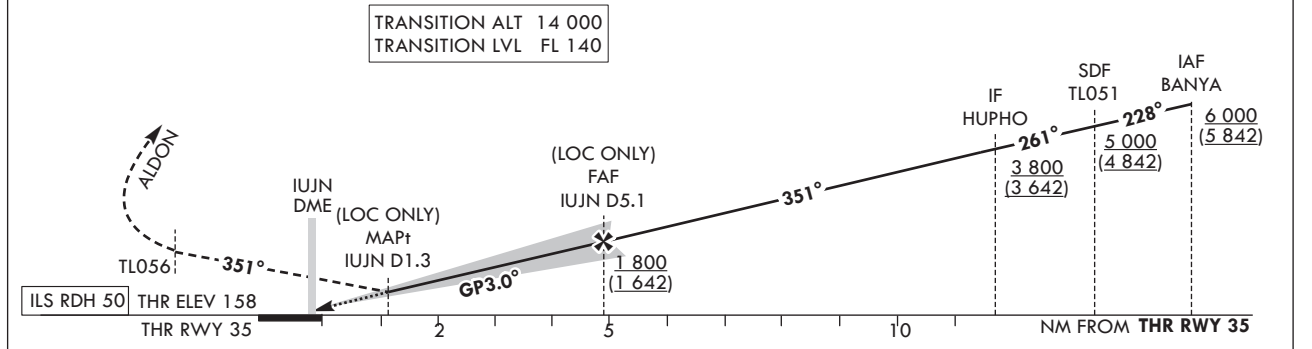
**ILS Z or LOC Z RWY 35**

Note : Approach under ICAO Flight Procedures.



RECOMMENDED PROFILE(LOC ONLY)	DME IUJN	5	4	3	2	1.3
Final Approach Gradient 5.31%, 323 ft/NM	ALT(HGT)	1 778 (1 620)	1 455 (1 297)	1 133 (975)	810 (652)	584 (426)

**MISSED APPROACH**  
Climb straight ahead until TL056, then turn right on track of 048° to ALDON and hold at 6 000 ft.



CATEGORY	DA(H)/MDA(H)	A	B	C	D	Rate of descent						
						Knots	60	90	120	150	180	
STA	CAT-1 (CG 2.5%)	FULL	580	1 500 m			V/V fpm	318	478	637	796	955
		ALS INOP	(422)	2 200 m								
	CAT-1 (CG 4.0%)	FULL	370	RVR 550 m, VIS 800 m								
		ALS INOP	(212)	1 200 m								
LOC	FULL	590	1 500 m			* Timing NOT authorized for defining the MAPt.						
	ALS INOP	(432)	2 200 m			* Circling not authorized.						

Change : Information of MAG VAR(8° W → 9° W), MSA and instrument approach procedure for RWY 35.

ULJIN/Uijin(RKTL)  
ILS Z or LOC Z RWY 35

AERONAUTICAL DATA TABULATION

ILS Z / LOC Z Approach to RWY 35 from BANYA(IAF)		
	Fix/Point	Coordinates
BANYA(IAF)	R 131 UJN/12.00 NM UJN	36°40'12.4"N 129°40'05.8"E
TL051(SDF)	BRG 351.29°	36°37'30.8"N 129°37'21.1"E
HUPHO(IF)	BRG 351.28°/10.65 NM UJN	36°36'07.0"N 129°31'45.8"E
D5.1 IUJN (FAF LOC Only)	BRG 351.28°/5.08 NM IUJN	36°41'26.4"N 129°29'42.5"E
D1.3 IUJN (MAPt LOC Only)	BRG 351.29°/1.30 NM IUJN	36°45'03.3"N 129°28'18.7"E
THR RWY 35	Final approach descent angle 3.04°(LOC ONLY)	36°46'09.3"N 129°27'53.2"E
TL056		36°48'33.0"N 129°26'57.6"E
ALDON	R 041 UJN/12.00 NM UJN	36°56'46.3"N 129°35'23.0"E

Change : Information of instrument approach procedure for RWY 35.

**INSTRUMENT  
APPROACH  
CHART - ICAO**

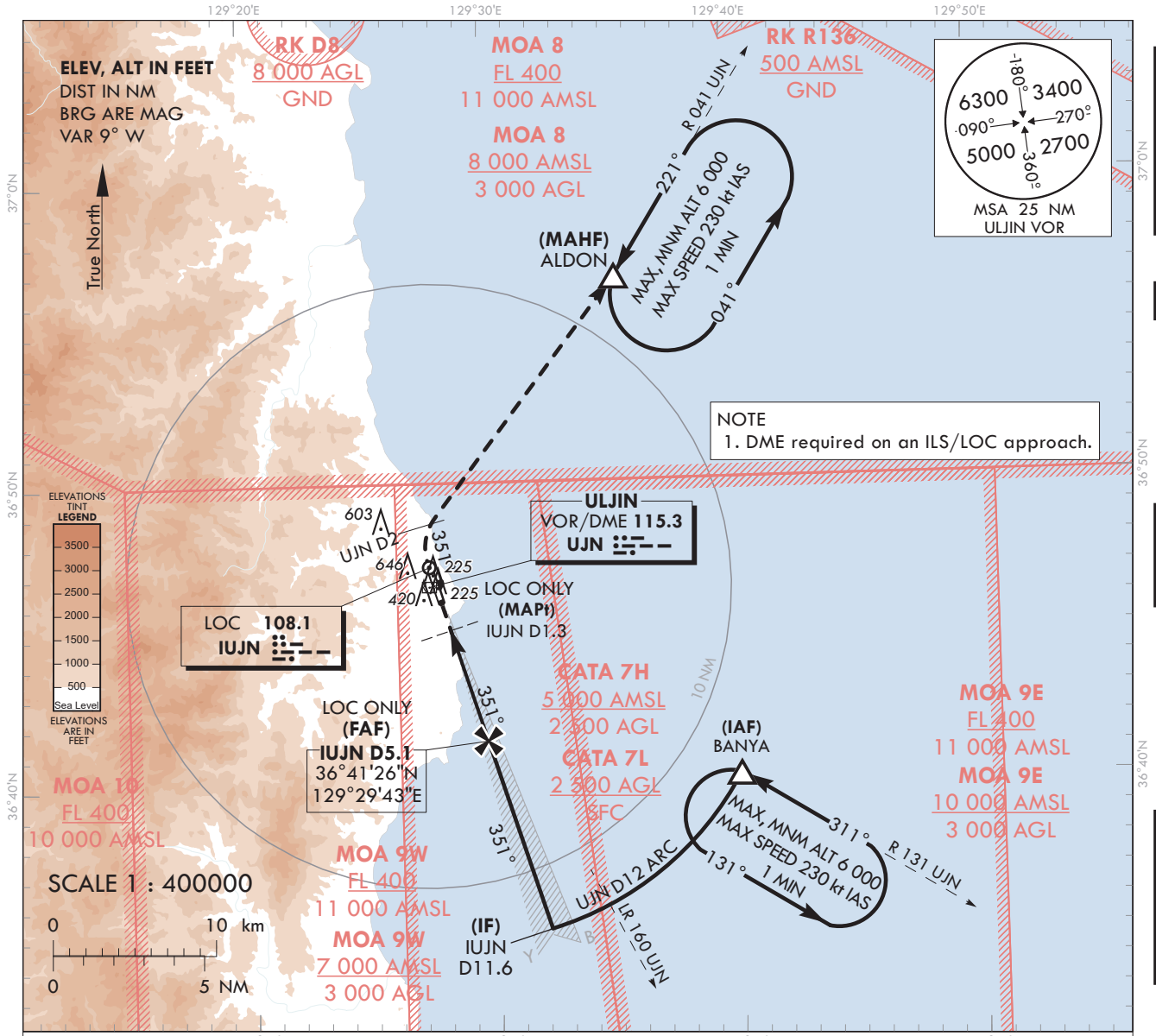
**AERODROME ELEV 175 ft**  
HEIGHTS RELATED TO  
THR RWY 35 - ELEV 158 ft

ULJIN	ARR	120.875
		317.65
ULJIN	TWR	118.55
		317.45

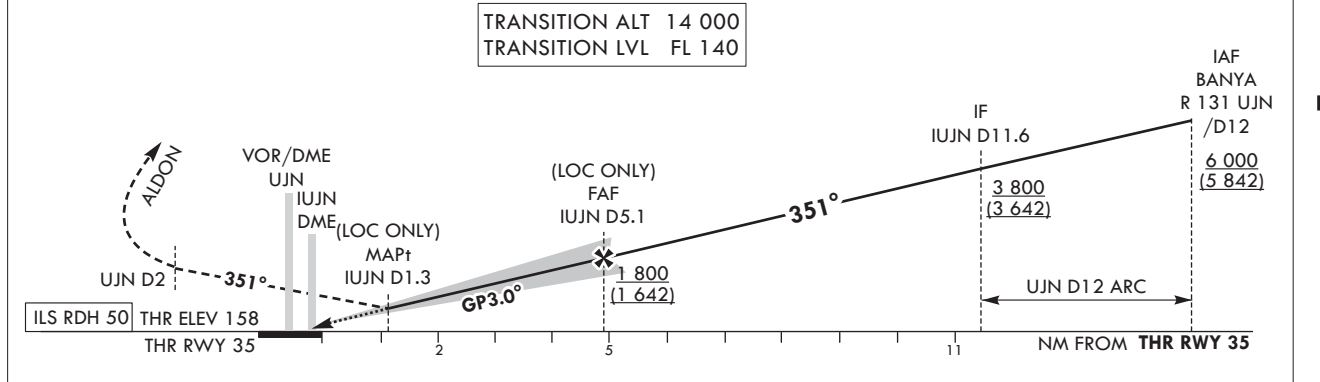
**ULJIN/ULjin(RKTL)**

**ILS Y or LOC Y RWY 35**

Note : Approach under ICAO Flight Procedures.



RECOMMENDED PROFILE(LOC ONLY)	DME IUJN	5	4	3	2	1.3	<b>MISSED APPROACH</b> Climb straight ahead until UJN D2, then turn right to ALDON and hold at 6 000 ft.
Final Approach Gradient 5.32%, 323 ft/NM	ALT(HGT)	1 781 (1 623)	1 458 (1 300)	1 135 (977)	973 (815)	586 (428)	



CATEGORY	DA(H)/MDA(H)	A				B				C				D						
		A				B				C				D						
STA	CAT-1 (CG 2.5%)	FULL	545				1 300 m				RVR 550 m, VIS 800 m				Rate of descent V/V fpm	60	90	120	150	180
		ALS INOP	(387)				2 000 m				318	478	637	795		955				
	CAT-1 (CG 4.0%)	FULL	358				1 200 m				* Timing NOT authorized for defining the MAPt.									
		ALS INOP	(200)				2 200 m				* Circling not authorized.									
LOC	FULL	590				1 500 m														
	ALS INOP	(432)				2 200 m														

Change : Information of MAG VAR(8° W → 9° W), MSA, UJN VOR/DME and instrument approach procedure for RWY 35.

ULJIN/Uijin(RKTL)  
ILS Y or LOC Y RWY 35

AERONAUTICAL DATA TABULATION

ILS Y / LOC Y Approach to RWY 35 from BANYA(IAF)		
	Fix/Point	Coordinates
BANYA(IAF)	R 131 UJN/12.00 NM UJN	36°40'12.4"N 129°40'05.8"E
D11.6 IUJN(IF)	BRG 350.99°/11.63 NM IUJN	36°35'10.6"N 129°32'07.5"E
D5.1 IUJN(FAF LOC Only)	BRG 351.28°/5.08 NM IUJN	36°41'26.4"N 129°29'42.5"E
D1.3 IUJN(MAPt LOC Only)	BRG 351.29°/1.30 NM IUJN	36°45'03.3"N 129°28'18.7"E
THR RWY 35	Final approach descent angle 3.05°(LOC ONLY)	36°46'09.3"N 129°27'53.2"E
UJN VOR/DME		36°46'35.2"N 129°27'26.9"E
D2 UJN	R 357 UJN/2.00 NM UJN	36°48'33.0"N 129°26'57.6"E
ALDON	R 041 UJN/12.00 NM UJN	36°56'46.3"N 129°35'23.0"E

Change : Information of instrument approach procedure for RWY 35.

**INSTRUMENT  
APPROACH  
CHART - ICAO**

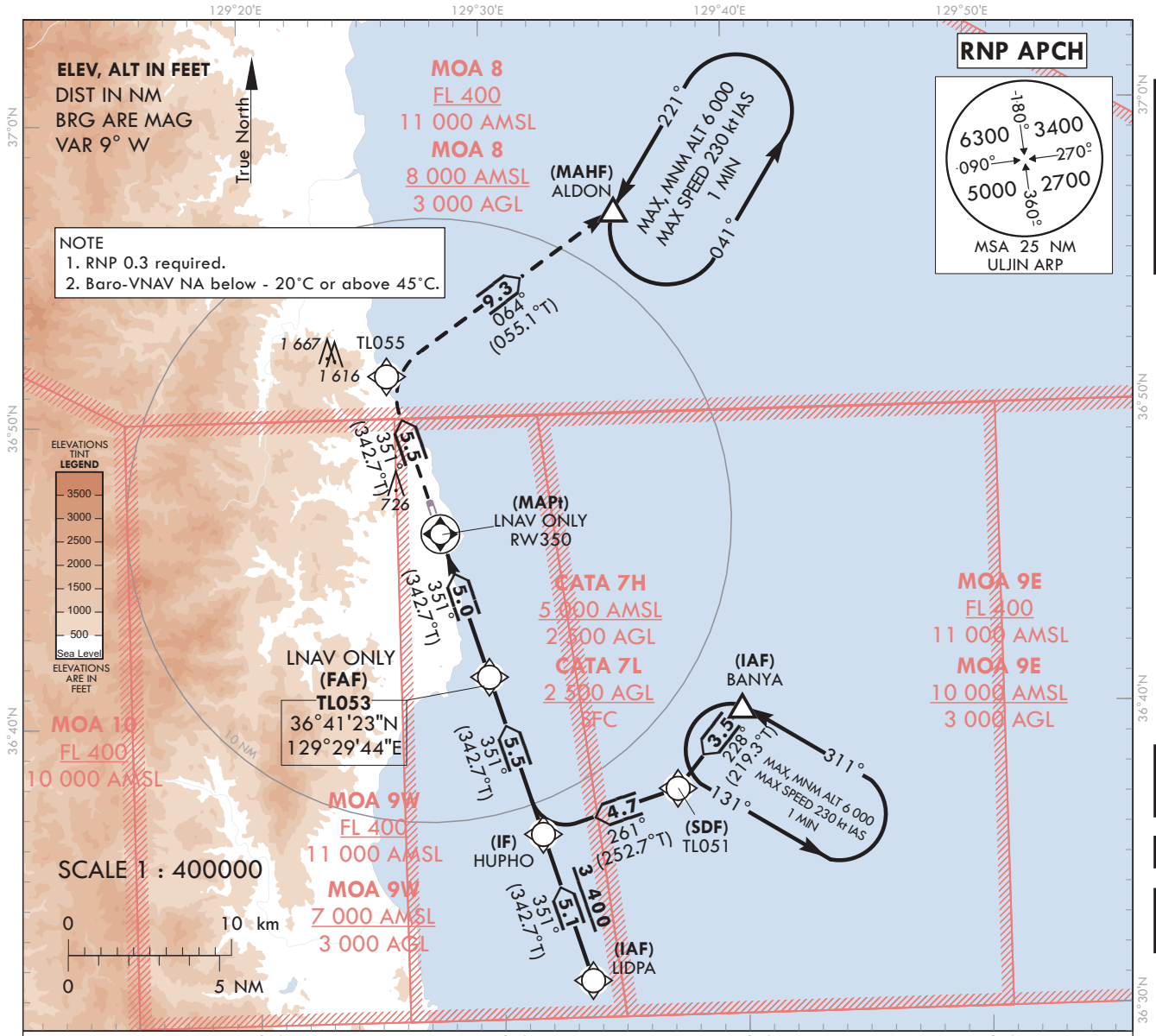
**AERODROME ELEV 175 ft**  
HEIGHTS RELATED TO  
THR RWY 35 - ELEV 158 ft

ULJIN	ARR	120.875
		317.65
ULJIN	TWR	118.55
		317.45

**ULJIN/ULjin(RKTL)**

**RNP RWY 35**

Note : Approach under ICAO Flight Procedures.



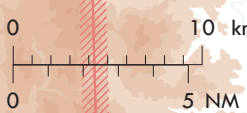
**NOTE**  
1. RNP 0.3 required.  
2. Baro-VNAV NA below - 20°C or above 45°C.

**ELEVATIONS TINT LEGEND**

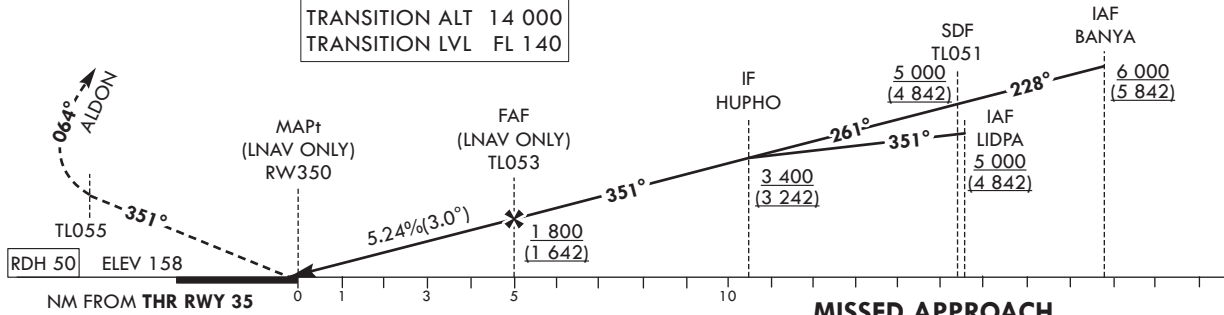
3500
3000
2500
2000
1500
1000
500
Sea Level

Sea Level  
ELEVATIONS ARE IN FEET

SCALE 1 : 400000



**NOTE**  
1. Missed approach 6.4% CG required to 6 000 ft for ATC purpose.



CATEGORY		DA(H)/MDA(H)	A	B	C	D
STA	LNNAV/VNAV	FULL	700	2 200 m		
		ALS INOP	(542)	2 900 m		
	LNNAV (CG2.5%)	FULL	950	3 300 m		
		ALS INOP	(792)	4 000 m		
LNNAV (CG4.0%)	FULL	770	2 100 m			
	ALS INOP	(612)	2 800 m			

**MISSED APPROACH**  
Climb to 6 000 ft on track of 351° to TL055, then turn right on track of 064° to ALDON. Hold as published.

Knots	60	90	120	150	180	
	Rate of descent	V/V fpm	318	478	637	796

\* Timing NOT authorized for defining the MAPt.  
\* Circling not authorized.

Change : Information of MAG VAR(8° W → 9° W), MSA and instrument approach procedure for RWY 35.

AERONAUTICAL DATA TABULATION

Instrument approach Procedure Coding Tables

RNP RWY 35 - via BANYA(IAF) to ALDON(IAF)

Serial Number	Path Descriptor	Waypoint Identifier	Fly-over	Course/Track °M(°T)	Distance (NM)	Turn direction	Altitude (ft)	Speed (kt)	Coordinates	VPA/TCH	Navigation specification	Remarks
001	IF	BANYA	-	-	-	-	+6 000	-	36°40'12.4"N 129°40'05.8"E	-	RNP APCH	IAF
002	TF	TL051	-	228(219.3)	3.5	-	+5 000	-	36°37'30.8"N 129°37'21.1"E	-	RNP APCH	SDF
003	TF	HUPHO	-	261(252.7)	4.7	-	+3 400	-	36°36'07.0"N 129°31'45.8"E	-	RNP APCH	IF
004	TF	TL053	-	351(342.7)	5.5	-	+1 800	-	36°41'22.5"N 129°29'44.1"E	-	RNP APCH	FAF
005	TF	RW350	Y	351(342.7)	5.0	-	+950	-	36°46'09.3"N 129°27'53.2"E	-3.00/50	RNP APCH	MAPt
006	TF	TL055	-	351(342.7)	5.5	-	-	-	36°51'25.4"N 129°25'50.7"E	-	RNP APCH	-
007	HM	ALDON	-	064(055.1)	9.3	-	@6 000	-	36°56'46.3"N 129°35'23.0"E	-	RNP APCH	-
008	HM	ALDON	Y	221(182.0)	-	L	@6 000	-230	36°56'46.3"N 129°35'23.0"E	-	RNP APCH	1 min (outbound timing)
009	HM	BANYA	Y	311(302.0)	-	L	@6 000	-230	36°40'12.4"N 129°40'05.8"E	-	RNP APCH	1 min (outbound timing)

RNP RWY 35 - via LIDPA(IAF) to ALDON(IAF)

Serial Number	Path Descriptor	Waypoint Identifier	Fly-over	Course/Track °M(°T)	Distance (NM)	Turn direction	Altitude (ft)	Speed (kt)	Coordinates	VPA/TCH	Navigation specification	Remarks
001	IF	LIDPA	-	-	-	-	+5 000	-	36°31'13.6"N 129°33'38.6"E	-	RNP APCH	IAF
002	TF	HUPHO	-	351(342.7)	5.1	-	+3 400	-	36°36'07.0"N 129°31'45.8"E	-	RNP APCH	IF
003	TF	TL053	-	351(342.7)	5.5	-	+1 800	-	36°41'22.5"N 129°29'44.1"E	-	RNP APCH	FAF
004	TF	RW350	Y	351(342.7)	5.0	-	+950	-	36°46'09.3"N 129°27'53.2"E	-3.00/50	RNP APCH	MAPt
005	TF	TL055	-	351(342.7)	5.5	-	-	-	36°51'25.4"N 129°25'50.7"E	-	RNP APCH	-
006	TF	ALDON	Y	064(055.1)	9.3	-	@6 000	-	36°56'46.3"N 129°35'23.0"E	-	RNP APCH	1 min (outbound timing)
007	HM	ALDON	Y	221(182.0)	-	L	@6 000	-230	36°56'46.3"N 129°35'23.0"E	-	RNP APCH	1 min (outbound timing)

Change : Information of instrument approach procedure for RWY 35.

**INSTRUMENT  
APPROACH  
CHART - ICAO**

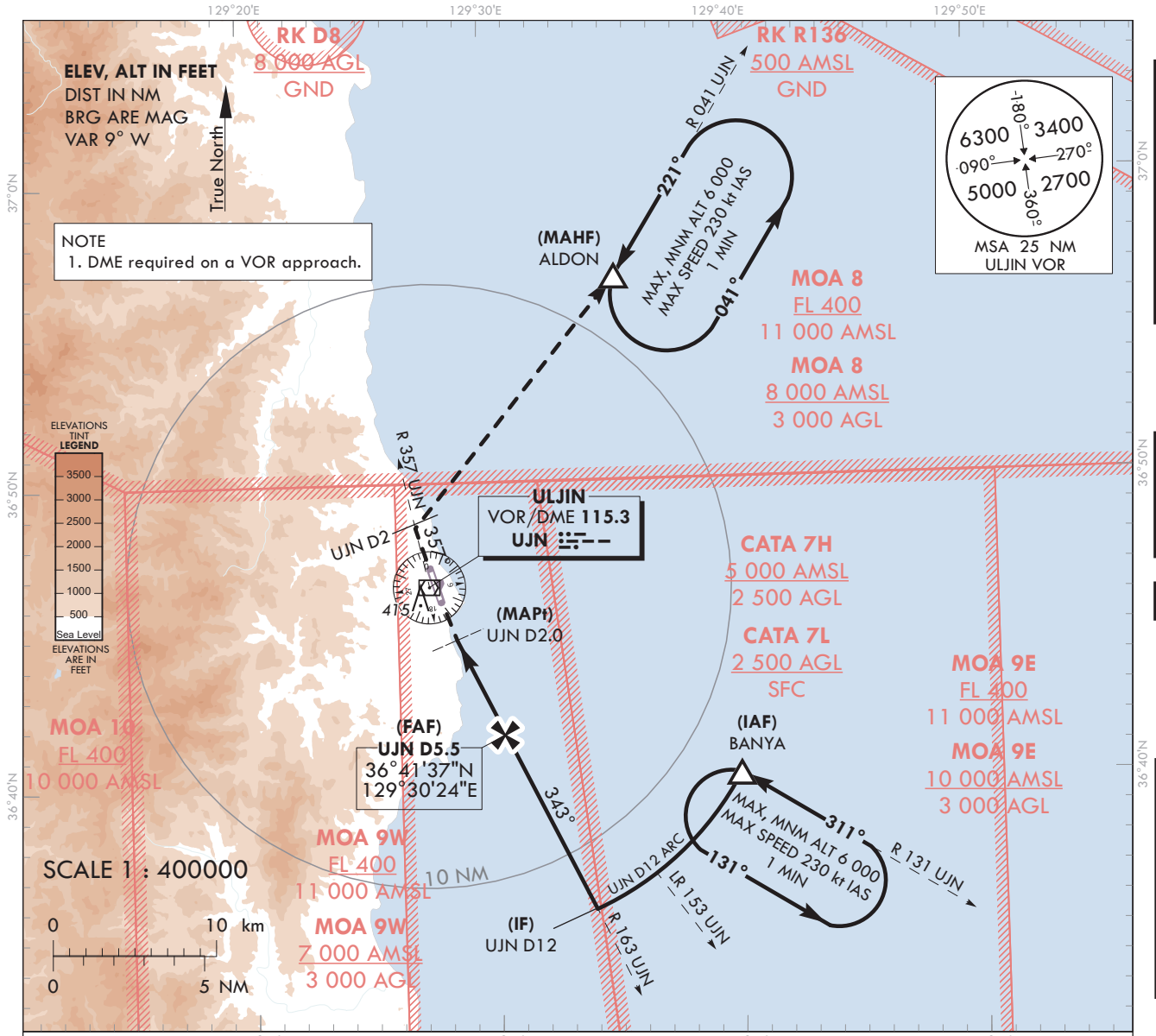
**AERODROME ELEV 175 ft  
HEIGHTS RELATED TO AD ELEV**

ULJIN	ARR	120.875
		317.65
ULJIN	TWR	118.55
		317.45

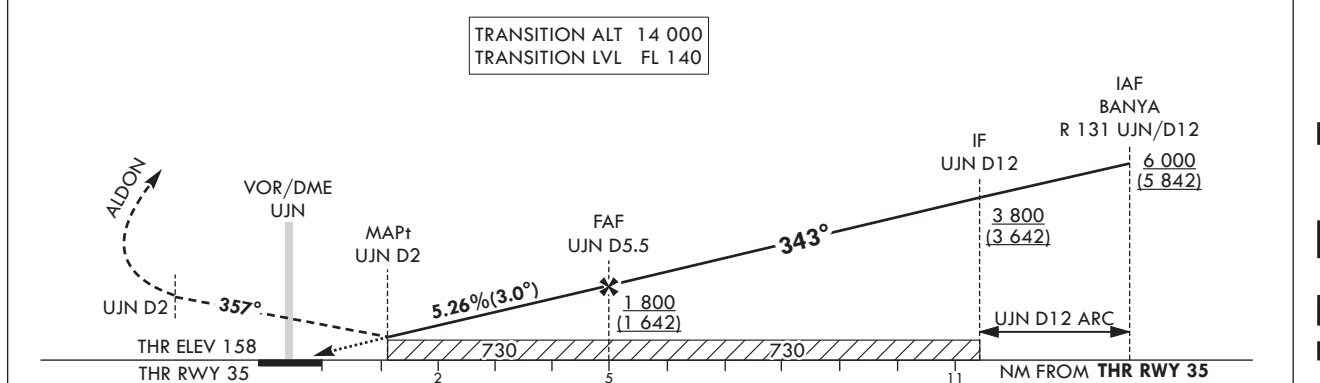
**ULJIN/ULjin(RKTL)**

**VOR RWY 35**

Note : Approach under ICAO Flight Procedures.



RECOMMENDED PROFILE	DME UJN	5	4	3	2	MISSED APPROACH
Final Approach Gradient 5.30%, 322 ft/NM	ALT(HGT)	1 639 (1 481)	1 317 (1 159)	995 (873)	673 (515)	Climb on R 163 UJN to UJN and R 357 UJN to 2 DME, then turn right to ALDON and hold at 6 000 ft.



CATEGORY	MDA(H)	A	B	C	D	Rate of descent V/V fpm	Knots	60	90	120	150	180
							322	483	644	805	966	
STA	FULL	730	2 000 m				* Timing NOT authorized for defining the MAPt. * Circling not authorized.					
	ALS INOP	(572)	2 700 m									

Change : Information of MAG VAR(8° W → 9° W), MSA, UJN VOR/DME and instrument approach procedure for RWY 35.

ULJIN/Uijin(RKTL)  
VOR RWY 35

AERONAUTICAL DATA TABULATION

VOR Approach to RWY 35 from BANYA(IAF)		
	Fix/Point	Coordinates
BANYA(IAF)	R 131 UJN / 12.00 NM UJN	36°40'12.4"N 129°40'05.8"E
D12.0 UJN(IF)	BRG 343.00° / 12.00 NM UJN	36°35'44.7"N 129°33'52.9"E
D5.5 UJN(FAF)	BRG 343.00° / 5.50 NM UJN	36°41'37.1"N 129°30'24.1"E
D2.0 UJN(MAPt)	BRG 343.00° / 2.00 NM UJN	36°44'46.8"N 129°28'31.4"E
THR RWY 35	Final approach descent angle 3.04°	36°46'09.3"N 129°27'53.2"E
UJN VOR/DME		36°46'35.2"N 129°27'26.9"E
D2 UJN	R 357 UJN / 2.00 NM UJN	36°48'32.9"N 129°26'56.9"E
ALDON	R 041 UJN / 12.00 NM UJN	36°56'46.3"N 129°35'23.0"E

Change : Information of instrument approach procedure for RWY 35.